

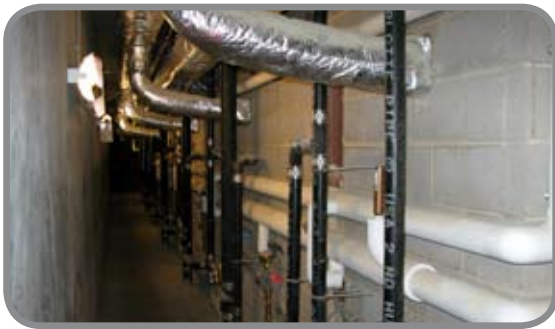


Bell County Jail

Belton, Texas

This project consists of the mechanical, electrical, and plumbing (MEP) design including the fire protection and fire alarms systems for 158,500 sf new facility with 650 plus beds and housing the following support functions: Kitchen, Laundry, Holding and Booking, and Sheriff Administration offices. This facility sits adjacent to the Bell County Courts Facility and be connected by a secure corridor.

The MEP design includes adding additional chiller and cooling towers to the existing central plant located in the adjacent courthouse facility. The mechanical design consists of chilled water/gas heating rooftop mounted air handling units and smoke evacuation system for the dorms, dayrooms, and separation cells. The plumbing system consisted of sanitary waste, storm drain, domestic cold and hot water, and natural gas systems. The electrical design includes lighting, power distribution, branch circuit wiring, fire alarm systems, and an emergency system with a diesel powered emergency generator to power the entire facility. This project was completed in late 2008.



PROJECT DETAILS

PROJECT TYPE:	County: Detention Facility	
PROJECT COST:	\$37,975,397	
SIZE:	158,500 sf / 650 beds expandable to 1,400 beds	
TYPE:	New Construction	
COMPLETION:	September 2008	
PROJECT FEATURES:	24 bed Infirmary Intake/Release Area Video Visitation	Detention Administration Maintenance Space Kitchen/Laundry